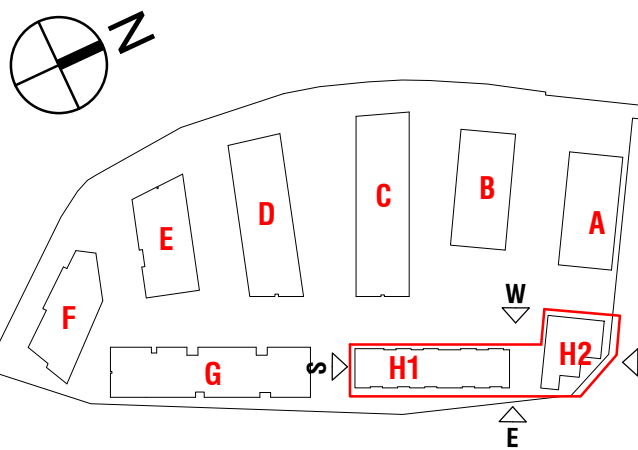


Orientation

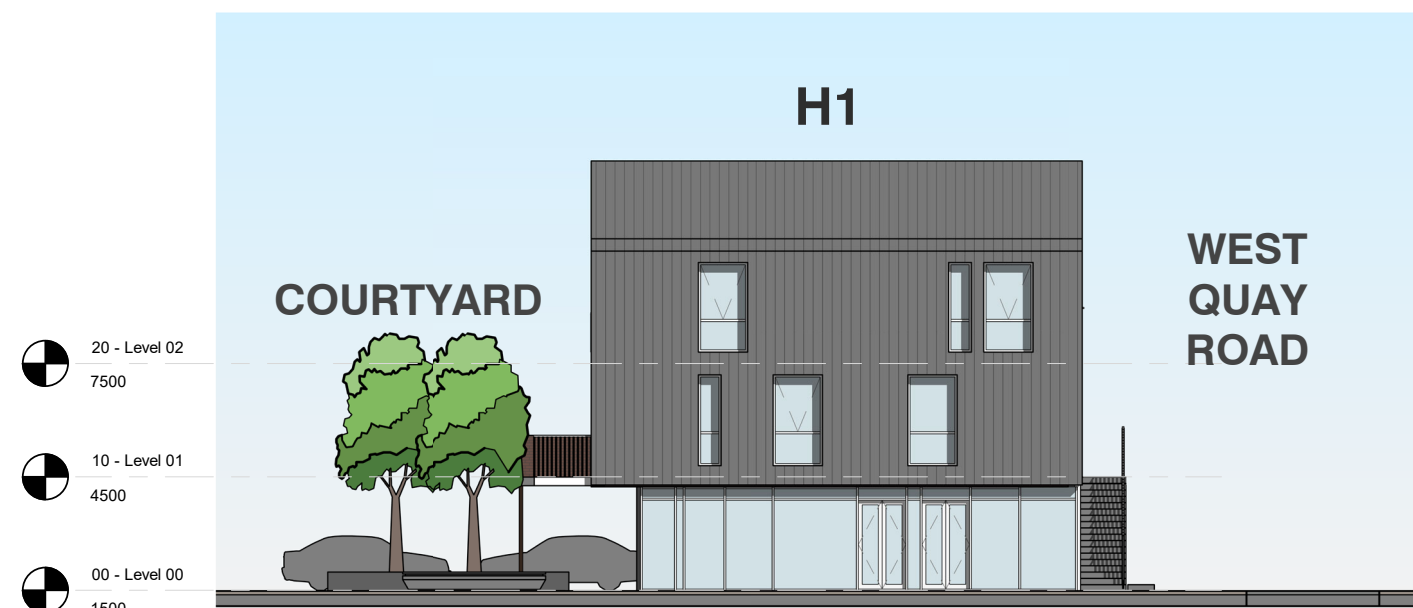
Key Plan



Block H1 North Elevation
1 : 200



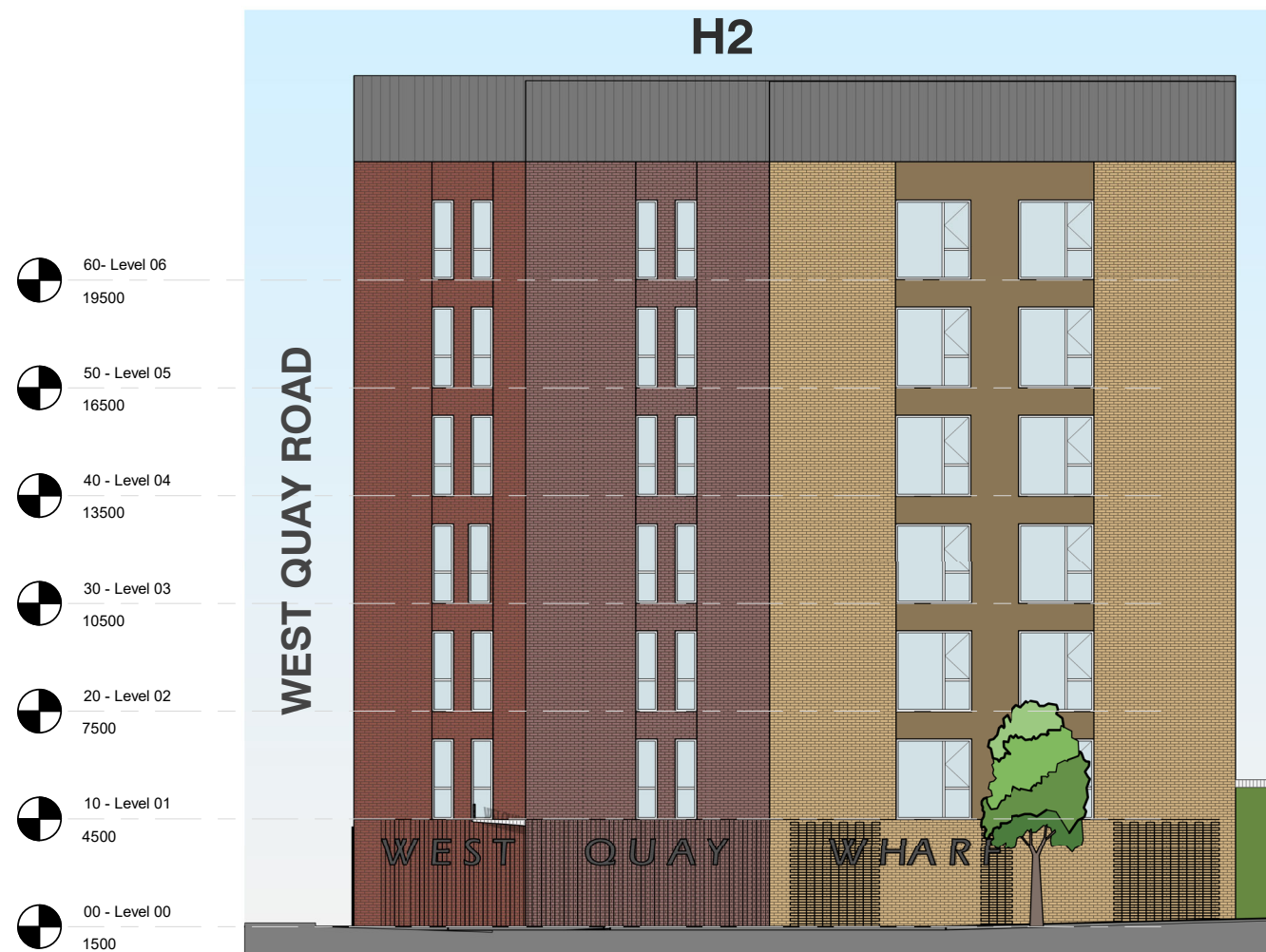
Block H1 East Elevation
1 : 200



Block H1 South Elevation
1 : 200



Block H1 West Elevation
1 : 200



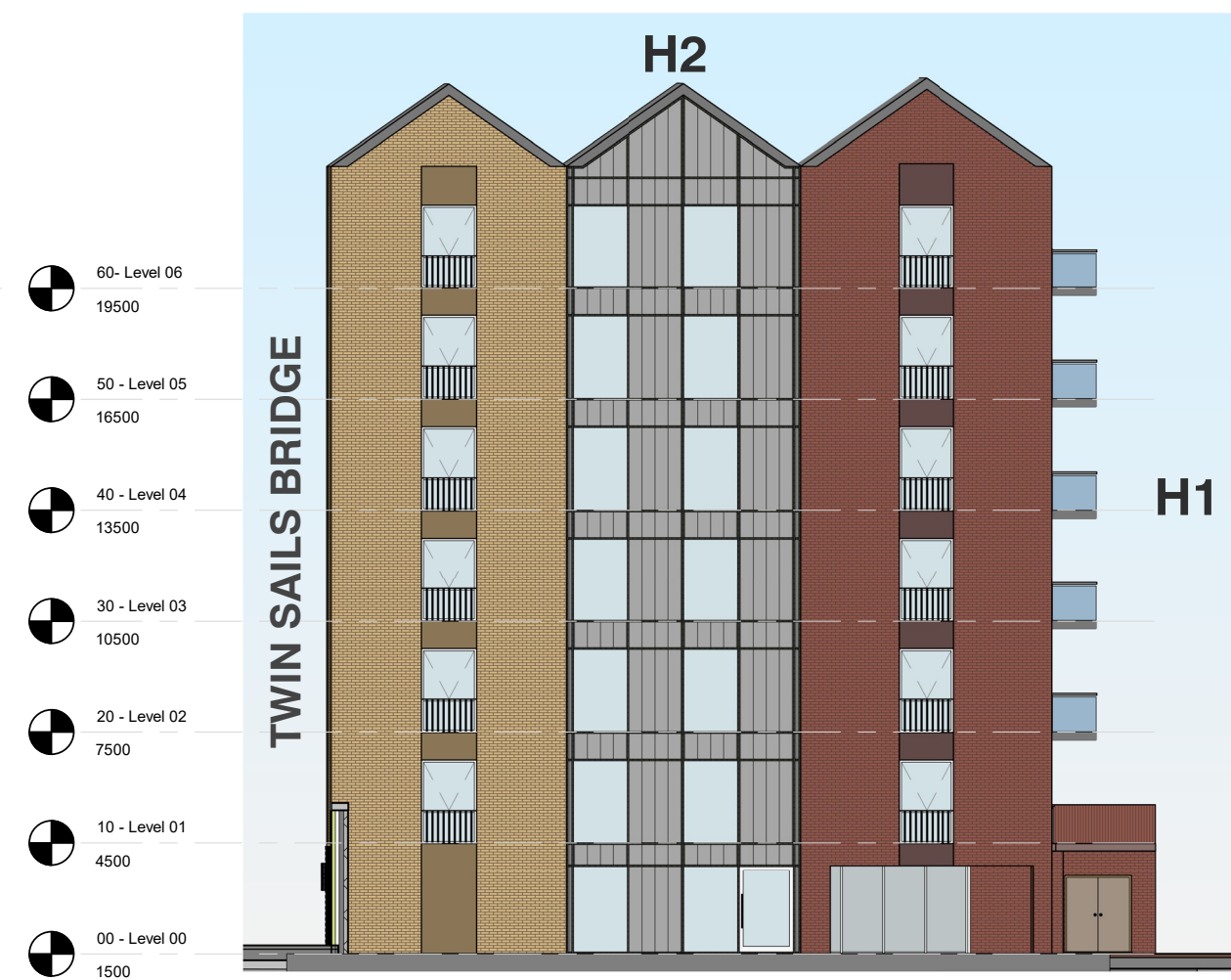
Block H2 North Elevation
1 : 200



Block H2 East Elevation
1 : 200



Block H2 South Elevation
1 : 200



Block H2 West Elevation
1 : 200

P03 04.02.22	Amendments to planning drawings issued on 26.03.21	SM	AR
P02 26.03.21	Amendments to planning drawings issued on 05.04.19	SS	AR
P01 05.04.19	Updated information for planning issued on 28.05.18	SM	AR

Rev. Date	Revision	By	Checked
-----------	----------	----	---------

leonard design architects
4th floor, Albion House
5-13 Canal Street
Nottingham, NG1 7EG, United Kingdom
t. +44 (0) 115 945 0080
e. office@leonarddesignarchitects.com

Client
Reuben & Morgan Ltd.

Project
West Quay Road, Poole

Drawing Title
Block H Elevations

Project Number	Suitability
0625	S4
Drawn by	Checked by
LW	SM
Scale @A1	Date
As indicated	05.04.19
File Identifier	Revision
0625 - LDA - ZZ - ZZ - DR - A - 08077	P03

Purpose of Issue
PLANNING

Project Status
PLANNING

